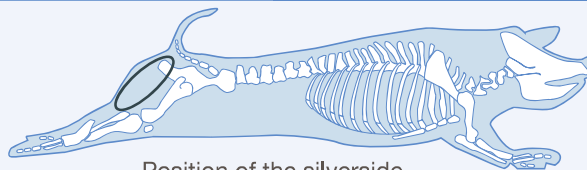


Thin Cut Escallops – Siverside (5–7 mm thick)

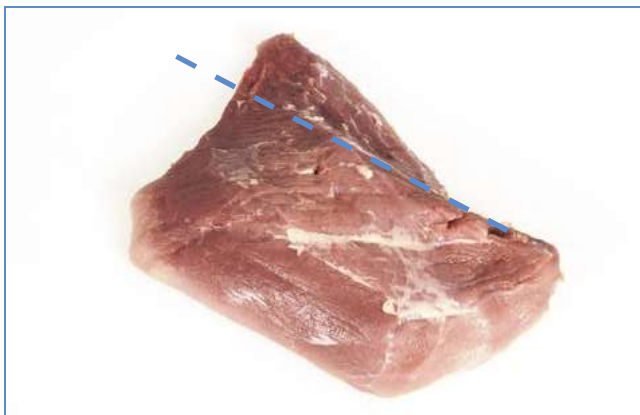


Position of the silverside.

Code: 3036



1 Remove the salmon cut from the silverside and trim off excess fat and gristle.



2 Follow the silver gristle to remove the side muscle including gristle.



3 Temper the silverside to -2°C. Cut fully trimmed silverside muscle across the grain to ...



4 ... create Thin Cut Escallops, maximum thickness 5–7 mm.



5 Thin Cut Escallops – Silverside.